

*Our Year 2020, some Highlights,* lively congregation

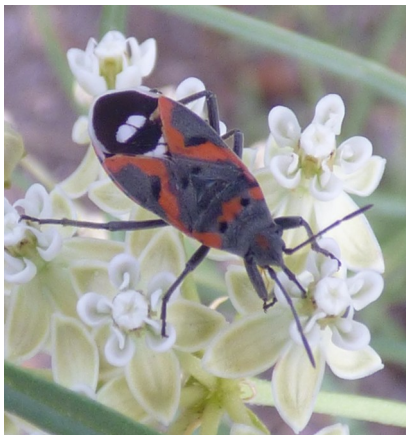
On July 12-17 bordering the Riverwalk north by the Blue Bug Wall appeared a lovely patch of Poison Milkweed, poisonous only if you eat the plant not if you merely sup a bit of its nectar.



*a Monarch butterfly , seldom seen here*



*a Buckeye, never before seen here*



*Small Milkweed Bug at-home*



*a busy buzzy bee*



*a Great Golden Digger Wasp*



*2 Taxiles Skippers F, M; she's sipping*



*with wings unfolded he's advancing*

Sadly, upon returning later I discovered this lively congregation mowed to dusty earth.